



GATE VALVES



FIREGUARD GLOBAL LTD.

Tel: 00-44-8450751042 • Fax: 00-44-8459751043
Email: Info@Fireguard-Uk.com • www.fireguard-Uk.com

Unit 11 • Chancel Industrial Estate • Newhall Street
Willenhall • WV13 1NX • United Kingdom



FS546607



GATE VALVES

250PSI / 300PSI

Fireguard Valves conforms to the latest version of AWWA standard C509 covering resilient seated gate valves for water supply services. All valves design are optimized for consistent performance and are corrosion resistant.

Fireguard Valves have an iron body, bonnet and O-ring plate. The wedge is totally encapsulated with rubber. The sealing rubber is permanently bonded to the wedge as per ASTM D429. Valves are supplied with O-ring seals at all pressure retaining joints and no flat gaskets are used.

Fireguard Valves are opened by turning left or right and provided with 2" square operating nut or a hand wheel with word "Open" and an arrow to indicate the direction to open.

Each valve casting have Fireguard name, pressure rating and year in which it was manufactured.

Each valve is tested by hydrostatic pressure equal to the requirements of AWWA C509. End connections include combinations of flanged, grooved and mechanical joint.

The valve is rated at 250 Psi to 300 Psi.



Groove x Groove
FGO 135



Flange x Groove
FGO 138



Groove x Groove
FGN 105



Flange x Groove
FGN 108

Resilient wedge Gate valves 2" – 16" is available as Non rising stem and as an OS&Y Gate valve in 2 1/2" – 16" sizes



Flanged FGO907



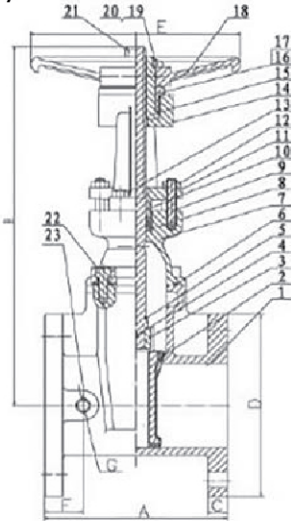
Flanged FGN909



Mechanical Joint
FGMN939

RIISING STEM FLANGED JOINT ENDS RESILIENT

WEDGE GATE VALVE
Outside Screw & Yoke
AWWA C509 300PSI
MODEL FGO 907



MATERIAL LIST

Sr. No	Part	Specification
1	Valve Body	Ductile Iron ASTM A 536
2	Resilient Wedge	Ductile Iron ASTM A 536/EPCM ASTM D 2000
3	Wedge Nut	Bronze ASTM B 584 UNS C83600
4	Dowel Pin	Stainless Steel ASTM A 276 UNS S42000
5	Stem BackSeat O-Ring	EPDM ASTM D 2000
6	Bonnet Gasket	EPDM ASTM D 2000
7	Bonnet	Ductile Iron ASTM A 536
8	Stem Packing	EPDM ASTM D 2000
9	Threaded Rod	Carbon Steel-Zinc Plated
10	Gland Bushing	ASTM B584 Bronze ASTM B 584
11	Gland	ASTM A 126-B Cast Iron ASTM A126-B
12	Gland Nut	18-8 Stainless Steel 18-8
13	Yoke Screw	Alloy Steel ASTM A 574 M Zinc Plated
14	Yoke	Cast Iron ASTM A 126-B
15	Yoke Bushing	Bronze ASTM B 584
16	Flat Point Set Screw	Alloy Steel ASTM F 912M Black Oxide
17	Yoke Bushing Retainer	Cast Iron ASTM A 126-B
18	Handwheel	Ductile Iron ASTM A 536
19	Handwheel Nut	Carbon Steel-Zinc Plated
20	Flat Head Screw	Carbon Steel-Zinc Plated
21	Stem	Stainless steel 304 - Option: Bronze ASTM B 150
22	Bonnet Screw	Alloy Steel ASTM A 574 M Zinc Plated
23	NPT Pipe Plug	Malleable Iron ANSI B16.3 (Epoxy Coated)

Freezing Weather Precaution:

Subsequent to testing a piping system, valves should be in an open position to allow complete drainage.

Note:

- 2 ½" to 10" -300 psi
- 2"&12"&14"&16" - 250psi,
- 2"- FM Approved only
- 2 ½"- 12"- UL & FM Approved
- 14"&16" UL Listed only

- Bolted Bonnet
- Rising Stem
- Resilient Wedge
- Flanged x Flanged
- 250Psi/300Psi/17.2 bar/20.7 bar Non shock cold working pressure
- Confirms to AWWA C509
- Coating - Electrostatically applied fusion bonded epoxy coated 0.2 – 0.5 mm inside and outside
- Maximum operating temperature 160°F / 71°C

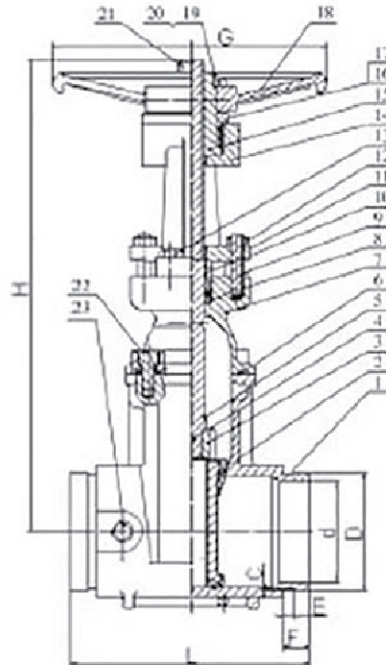
DIMENSIONS - WEIGHTS - QUANTITIES

Size		Dimensions															Bolt Circle	Flange Holes	Turns To Open	Weight			
		A	B Open	B Closed	C	D	E	F	G	In	mm	In	mm	In	mm	In				mm	lbs	Kg	
2	50	7.0	178	17.2	437	15.1	384	0.63	16.0	6.0	152	7.9	200	1.50	38	1.6	40	4.74	120.5	4	6.3	44	20
2.5	65	7.5	190	17.8	453	14.9	378	0.69	17.5	7.0	178	7.9	200	1.50	38	1.6	40	5.50	140	4	8.8	45	20
3	80	8	203	19.7	500	15.9	405	0.75	19	7.5	191	7.9	200	1.73	44	2.1	54	6.00	152	4	10.5	53	24
4	100	9	229	21.0	534	16.6	422	0.94	24.0	9.0	229	10.2	260	2.13	54	2.1	54	7.50	191	8	10.4	94	43
6	150	10.5	267	29.3	744	22.9	581	1.00	25.4	11.0	279	12.4	315	2.24	57	2.5	64	9.50	241	8	15.7	154	70
8	200	11.5	292	37.0	939	28.5	724	1.13	28.6	13.5	343	14.8	375	2.48	63	2.8	70	11.75	298	8	17.2	247	112
10	250	13	330	44.8	1139	34.5	877	1.19	30.2	16.0	406	16.4	416	2.56	65	2.8	70	14.25	362	12	21.4	349	159
12	300	14	356	52.2	1326	39.9	1014	1.25	31.8	19.0	483	17.5	445	2.91	74	3.4	86	17.00	432	12	25.5	484	220
14	350	15	381	62.7	1592	48.3	1226	1.4	35	21	533	19.7	500	2.95	75	3.1	80	18.74	476	12	44	709	322
16	400	16	406	66.2	1682	50.7	1288	1.5	37	23.5	597	19.7	500	3.03	77	3.1	80	21.2	539.5	16	50	914	415

Note: Flange Conforms to ANSI B16.1/16.42 Class125/150FF or PN10/PN16 Optional RF

RISING STEM GROOVE JOINT ENDS RESILIENT WEDGE GATE VALVE

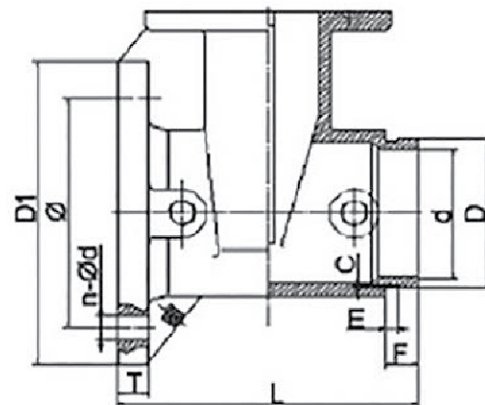
AWWA C509 300PSI
MODEL FGO 135/138



Freezing Weather Precaution:

Subsequent to testing a piping system, valves should be in an open position to allow complete drainage.

Groove x Groove FGO 135



Flanged x Groove FGO 138

DIMENSIONS - WEIGHTS - QUANTITIES

Size		Dimensions																						Bolt Circle	
		L		H Open		H Closed		C		D		E		F		G		d		D1		T			
In	mm	In	mm	In	mm	In	mm	In	mm	In	mm	In	mm	In	mm	In	mm	In	mm	In	mm	In	mm	In	mm
2.5	65	7.5	190.5	18.3	466	15.2	386	0.08	2	2.87	73	0.31	7.95	0.94	24	7.87	200	2.6	65	7	178	0.69	17.5	5.5	140
3	80	8	203	20.1	510	15.9	405	0.08	2	3.50	89	0.35	9	0.98	25	10.00	254	3.0	73	7.5	191	0.75	19	6.00	152.5
4	100	9	229	22.4	568	16.6	422	0.08	2	4.49	114	0.35	9	0.98	25	10.00	254	4.0	100	9.0	229	0.94	24	7.50	190.5
6	150	10.5	267	30.3	769	22.9	581	0.08	2	6.61	168	0.35	9	0.98	25	12.40	315	6.0	150	11.0	279	1.00	25.4	9.50	241
8	200	11.5	292	37.8	950	28.5	724	0.09	2.3	8.62	219	0.47	12	1.22	31	14.76	375	8.0	200	13.5	343	1.13	28.6	11.73	298.5
10	250	13	330	45.1	1145	35.1	891	0.1	2.55	10.74	272.9	0.52	13.2	1.25	31.7	16.38	416	10	250	15.98	406	1.19	30.2	14.25	362
12	300	14	356	52.4	1330	40.2	1020	0.13	3.35	12.78	324.5	0.52	13.2	1.25	31.7	17.52	445	12	300	19.2	483	1.25	31.8	17.01	432
14	350	15	381	62.7	1592	48.3	1226	0.12	3.15	14	355.6	0.5	12.7	1.44	36.5	19.7	500	13.4	340	21	533	1.4	35	18.74	476
16	400	16	406	66.2	1682	50.7	1288	0.13	3.2	16	406.4	0.5	12.7	1.44	36.5	19.7	500	15.4	390	23.5	597	1.5	37	21.2	539.5

Note:

- 2 ½" to 10" -300 psi
- 2"&12"&14"&16" - 250psi,
- 2"- FM Approved only
- 2 ½"- 12"- UL & FM Approved
- 14"&16" UL Listed only

Size	Flanged Holes	Turns To Open
2.5	4 Ø 19	8
3	4 Ø 19	10.5
4	8 Ø 19	13.75
6	8 Ø 23	16
8	8 Ø 23	17.5
10	12 Ø 26	21.5
12	12 Ø 26	26
14	12 Ø 29	44
16	16 Ø 29	50

MATERIAL LIST

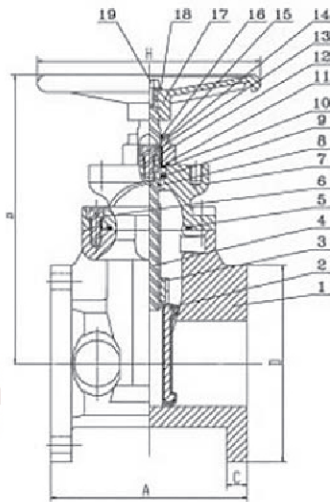
- Bolted Bonnet
- Rising Stem
- Resilient Wedge
- Flanged x Groove and Groove x Groove
- 250Psi/300Psi/17.2 bar/20.7 bar Non shock cold working pressure
- Confirms to AWWA C509
- Electrostatically applied fusion bonded epoxy coated 0.2 – 0.5 mm inside and outside

Sr. No	Part	Specification
1	Valve Body	Ductile Iron ASTM A 536
2	Resilient Wedge	Ductile Iron ASTM A 536/EPCM ASTM D 2000
3	Wedge Nut	Bronze ASTM B 584 UNS C83600
4	Dowel Pin	Stainless Steel ASTM A 276 UNS S42000
5	Stem Back Seat O-Ring	EPDM ASTM D 2000
6	Bonnet Gasket	EPDM ASTM D 2000
7	Bonnet	Ductile Iron ASTM A 536
8	Stem Packing	EPDM ASTM D 2000
9	Threaded Rod	Carbon Steel-Zinc Plated
10	Gland Bushing	Bronze ASTM B 584
11	Gland	Cast Iron ASTM A 126-B
12	Gland Nut	Stainless Steel 18-8
13	Yoke Screw	Alloy Steel ASTM A 574 M Zinc Plated
14	Yoke	Cast Iron ASTM A 126-B
15	Yoke Bushing	Bronze ASTM B 584
16	Flat Point Set Screw	Alloy Steel ASTM F 912M Black Oxide
17	Yoke Bushing Retainer	Cast Iron ASTM A 126-B
18	Handwheel	Ductile Iron ASTM A 536
19	Handwheel Nut	Carbon Steel Zinc Plated
20	Flat Head Screw	Carbon Steel Zinc Plated
21	Stem	Stainless steel 304 - Option: Bronze ASTM B 150
22	Bonnet Screw	Alloy Steel ASTM A 574M Zinc Plated

Optional: Stem in Bronze ASTM B150 UNS C61400

NON RISING STEM FLANGED JOINT ENDS RESILIENT WEDGE GATE VALVE

AWWA C509 250PSI / 300PSI
MODEL FGN 909



Sr. No	Part	Specification
1	Valve Body	Ductile Iron ASTM A 536
2	Resilient Wedge	Ductile Iron ASTM A 536/EPCM ASTM D 2000
3	Wedge Nut	Bronze ASTM B 584 UNS C83600
4	Stem	Bronze ASTM B 584 UNS C83600
5	Bonnet Gasket	EPDM ASTM D 2000
6	Bonnet Screw	Alloy Steel ASTM A 574 M Zinc Plated
7	Bonnet	Ductile Iron ASTM A 536
8	Stem Primary O-Ring	EPDM ASTM D 2000
9	Stem Thrust Washer (lower)	Bronze ASTM B 584 UNS C83600
10	Stem Thrust Washer (upper)	Stainless Steel ASTM A 276 UNS S41000
11	Gland Seal O-Ring	EPDM ASTM D 2000
12	Stem Seal Bushing	Bronze ASTM B 584 UNS C83600
13	Stem Secondary O-Ring (2)	EPDM ASTM D 2000
14	Gland Flange	Ductile Iron ASTM A 536
15	Gland Flange Screw	Alloy Steel ASTM A 574M Zinc Plated
16	Stem Ring Wiper	EPDM ASTM D 2000
17	Square Operating Nut	Cast Iron ASTM A 126-B
17A	Handwheel (Optional)	Ductile Iron ASTM A 536
18	Flat Washer	Carbon Steel-Zinc Plated
19	Screw	Alloy Steel ASTM A 574 M Zinc Plated

Flanged
FGN 909

Flanged x Flanged
Shown with optional
handwheel

Note:

- 2 ½" to 10" -300 psi
- 2" & 12" & 14" & 16" - 250psi,
- 2" - FM Approved only
- 2 ½" - 12" - UL & FM Approved
- 14" & 16" UL Listed only

- Bolted Bonnet
- Non Rising Stem
- Resilient Wedge
- Flanged x Flanged
- 250Psi/300Psi/17.2 bar/20.7 bar Non shock cold working pressure
- Confirms to AWWA C509
- Coating - Electrostatically applied fusion bonded epoxy coated 0.2 – 0.5 mm inside and outside
- Maximum operating temperature 160°F / 71°C

Freezing Weather Precaution:

Subsequent to testing a piping system, valves should be in an open position to allow complete drainage.

DIMENSIONS - WEIGHTS - QUANTITIES

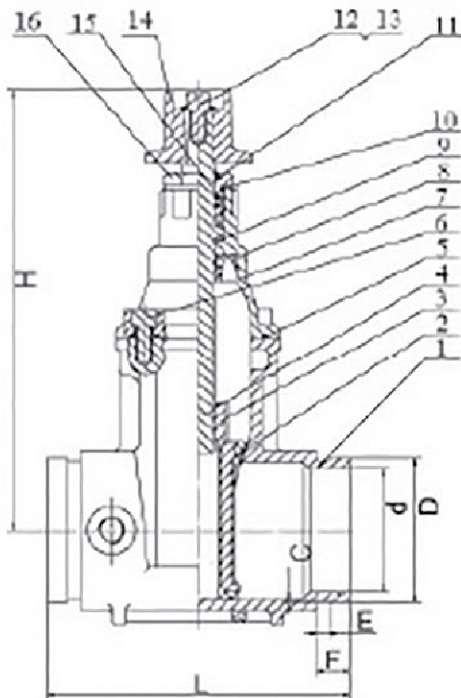
Size		Dimensions										Bolt Circle		Flange Holes	Turns To Open	Weight	
		A		B		C		D		H							
In	mm	In	mm	In	mm	In	mm	In	mm	In	mm	In	mm			lbs	Kg
2	50	7.0	178	10.0	255	0.63	16.0	6.0	152	7.9	200	4.75	121	4	6.5	30	14
2.5	65	7.5	190	11.3	287	0.69	17.5	7.0	178	7.9	200	5.50	140	4	8.8	35	16
3	80	8	203	12.6	321	0.75	19	7.5	191	10.2	260	6.00	152	4	10.6	45	20
4	100	9	229	13.5	344	0.94	24.0	9.0	229	10.2	260	7.50	191	8	13.0	71	32
6	150	10.5	267	17.4	441	1.00	25.4	11.0	279	14.8	375	9.50	241	8	15.6	122	55
8	200	11.5	292	20.8	529	1.13	28.6	13.5	343	14.8	375	11.73	298	8	17.3	196	89
10	250	13	330	24.2	614	1.19	30.2	16.0	406	15.7	400	14.25	362	12	21.4	294	134
12	300	14	356	27.6	700	1.25	31.8	19.0	483	19.7	500	17.01	432	12	25.3	426	194
14	350	15	381	31.8	808	1.4	35	21	533	19.7	500	18.74	476	12	44	610	277
16	400	16	406	34.2	869	1.5	37	23.5	597	19.7	500	21.2	539.5	16	50	824	374

Note: Flange Conforms to ANSI B16.1 Class 125

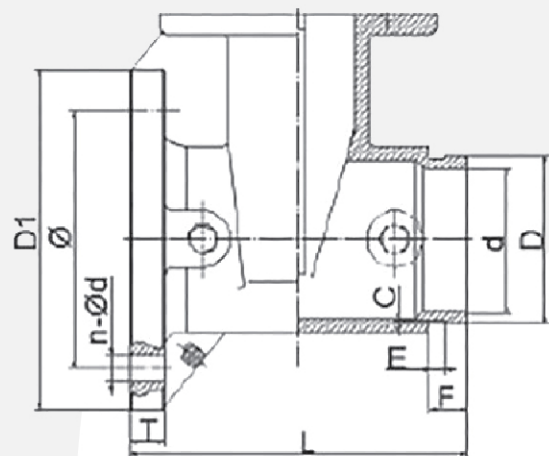
NON RISING STEM GROOVE JOINT ENDS RESILIENT WEDGE GATE VALVE

AWWA C509 250PSI / 300PSI

MODEL FGN 105/108



Groove x Groove
FGN105



Flanged x Groove
FGN108

Freezing Weather Precaution:

Subsequent to testing a piping system, valves should be in an open position to allow complete drainage.

DIMENSIONS - WEIGHTS - QUANTITIES

Size		Dimensions																		Bolt Circle	Flange Holes	Turns To Open	
		L		C		D		E		F		G		d		DI		T					
In	mm	In	mm	In	mm	In	mm	In	mm	In	mm	In	mm	In	mm	In	mm	In	mm	In	mm		
2.5	65	7.5	190.5	0.08	2	2.87	73	0.31	7.95	0.94	24	7.87	200	2.6	65	7	178	0.69	17.5	5.5	140	4 Ø 19	8
3	80	8.0	203	0.08	2	3.50	89	0.35	9	0.98	25	10.00	254	3.0	73	7.5	191	0.75	19	6.00	152.5	4 Ø 19	10.5
4	100	9.0	229	0.08	2	4.49	114	0.35	9	0.98	25	10.00	254	4.0	100	9.0	229	0.94	24	7.50	190.5	8 Ø 19	13.75
6	150	10.5	267	0.08	2	6.61	168	0.35	9	0.98	25	12.40	315	6.0	150	11.0	279	1.00	25.4	9.50	241	8 Ø 23	16
8	200	11.5	292	0.09	2.3	8.62	219	0.47	12	1.22	31	14.76	375	8.0	200	13.5	343	1.13	28.6	11.73	298.5	8 Ø 23	17.5
10	250	13	330	0.1	2.55	10.74	272.9	0.52	13.2	1.25	31.7	16.38	416	10	250	15.98	406	1.19	30.2	14.25	362	12 Ø 23	21.5
12	300	14	356	0.13	3.35	12.78	324.5	0.52	13.2	1.25	31.7	17.52	445	12	300	19.2	483	1.25	31.8	17.01	432	12 Ø 23	26
14	350	15	381	0.12	3.15	14	355.6	0.5	12.7	1.44	36.5	19.7	500	13.4	340	21	533	1.4	35	18.74	476	12 Ø 29	44
16	400	16	406	0.13	3.2	16	406.4	0.5	12.7	1.44	36.5	19.7	500	15.4	390	23.5	597	1.5	37	21.2	539.5	16 Ø 29	50

MATERIAL LIST

Sr. No	Part	Specification
1	Valve Body	Cast Iron ASTM A 536
2	Resilient Wedge	Ductile Iron ASTM A 536/EPCM ASTM D 2000
3	Wedge Nut	Bronze ASTM B 584 UNS C83600
4	Stem	Stainless Steel ASTM A 276 UNS S41000
5	Bonnet Gasket	EPDM ASTM D 2000
6	Bonnet Screw	Alloy Steel ASTM A 574 M Zinc Plated
7	Bonnet	Cast Iron ASTM A 126-B
8	Stem Primary O-Ring	EPDM ASTM D 2000
9	Stem Thrust Washer	Stainless Steel ASTM A 276 UNS S41000
10	Gland Seal O-Ring	EPDM ASTM D 2000
11	Stem Ring Wiper	EPDM ASTM D 2000
12	Operating Nut Washer	Carbon Steel Zinc Plated
13	Operating Nut Screw	Alloy Steel ASTM A 574 M Zinc Plated
14	Square Operating Nut	Cast Iron ASTM A 126-B
14 (A)	Handwheel (Optional)	Ductile Iron ASTM A 536
15	Stem Primary O-Ring	EPDM ASTM D 2000
16	Stem Seal Bushing	Brass ASTM B16 UNS C36000

Note:

- 2 ½" to 10" -300 psi
- 2" & 12" & 14" & 16" - 250psi,
- 2"- FM Approved only
- 2 ½"- 12"- UL & FM Approved
- 14" & 16" UL Listed only
- Bolted Bonnet
- Non Rising Stem
- Resilient Wedge
- Flanged x Groove and Groove x Groove
- 250Psi/300Psi/17.2 bar/20.7 bar Non shock cold working pressure
- Confirms to AWWA C509
- Coating - Electrostatically applied fusion bonded epoxy 0.2 – 0.5 mm inside and outside
- Maximum operating temperature 160°F / 71°C

MECHANICAL JOINT ENDS RESILIENT WEDGE GATE VALVE

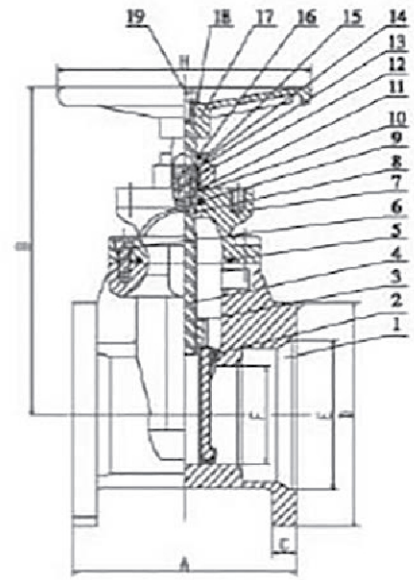
AWWA C509 250PSI / 300PSI
MODEL FGMN 939

- Bolted Bonnet
- Non Rising Stem
- Resilient Wedge
- Mechanical Joing Ends
- 250Psi/300Psi/17.2 bar/20.7 bar Non shock cold working pressure
- Confirms to AWWA C509
- Coating - Electrostatically applied fusion bonded epoxy coated 0.2 – 0.5 mm inside and outside
- Maximum operating temperature 160°F / 71°C



MATERIAL LIST

Sr. No	Part	Specification
1	Valve Body	Ductile Iron ASTM A 536
2	Resilient Wedge	Ductile Iron ASTM A 536/EPCM ASTM D 2000
3	Wedge Nut	Bronze ASTM B 584 UNS C83600
4	Stem	Bronze ASTM B 150 UNS C61400
5	Bonnet Gasket	EPDM ASTM D 2000
6	Bonnet Screw	Alloy Steel ASTM A 574 M Zinc Plated
7	Bonnet	Ductile Iron ASTM A 536
8	Stem Primary O-Ring	EPDM ASTM D 2000
9	Stem Thrust Washer (lower)	Bronze ASTM B 584 UNS C83600
10	Stem Thrust Washer (upper)	Stainless Steel ASTM A 276 UNS S41000
11	Gland Seal O-Ring	EPDM ASTM D 2000
12	Stem Seal Bushing	Bronze ASTM B 584 UNS C83600
13	Stem Secondary O-Ring (2)	EPDM ASTM D 2000
14	Gland Flange	Ductile Iron ASTM A 536
15	Gland Flange Screw	Alloy Steel ASTM A 574M Zinc Plated
16	Stem Ring Wiper	EPDM ASTM D 2000
17	Sqaure Operating Nut	Cast Iron ASTM A 126-B
17A	Handwheel (optional)	Ductile Iron ASTM A 536
18	Flat Washer	Carbon Steel-Zinc Plated
19	Screw	Alloy Steel ASTM A 574 M Zinc Plated



Freezing Weather Precaution:

Subsequent to testing a piping system, valves should be in an open position to allow complete drainage.

DIMENSIONS - WEIGHTS - QUANTITIES

Size	Dimensions														Bolt Circle	Flange Holes	Turns To Open	Weight			
	A	B	C	D	E	F	H														
3	80	8.0	203	12.7	322	0.94	24	7.7	196	4.9	126	3.1	80	10.2	260	6.19	157	4	10.8	43	20
4	100	10.0	254	13.5	344	1.00	26	9.1	232	6.0	153	3.9	100	10.2	260	7.50	191	4	13.0	70	36
6	150	11.5	292	17.4	441	1.06	27	11.1	283	8.1	206	5.9	150	14.8	375	9.50	241	6	15.7	112	51
8	200	11.5	292	20.8	529	1.12	28	13.4	340	10.3	261	7.9	200	14.8	375	11.75	298	6	17.3	170	77
10	250	13.0	330	24.2	614	1.18	30	15.7	400	12.3	313	9.8	250	15.7	400	14.00	356	8	21.4	267	121
12	300	14.0	356	27.6	700	1.25	32	18	456	14.4	367	11.8	300	19.7	500	16.25	413	8	25.3	388	176
14	350	15	381	31.8	808	1.34	34	20.3	516	16.5	420.1	2.95	75	19.7	500	18.75	476.3	10	44	577	262
16	400	16	406	34.2	869	1.38	35	22.6	573	18.6	473.5	3.03	77	19.7	500	21	533.4	12	50	760	345